

# Exact Synergy

## Business Process Management

**Business Process Management (BPM) is a set of tools that allow companies to tie isolated operations together. By uniting people, processes and information within and outside your organization in a single platform, you can enjoy a solid business advantage.**

Exact Synergy is a Web-based business management solution that enables people, groups and departments to connect their processes in real-time, all accessed from one centralized place. It provides greater control and gives managers the freedom to focus on growing their business, instead of just running it. Synergy allows companies to have a clear, manageable picture of the corporate workflow, bringing the processes that live outside your software system into the organization.

### **Organizational Superiority through Operational Efficiencies**

Synergy provides a standardized, comprehensive workflow engine that lets you define your business rules, enabling you to track and automate manual and hidden processes from a secure, centralized portal. It gives you “all access, all the time” so you can keep pace with rapid change. With the framework and foundation of Synergy, your business processes

like HR, documents, projects, finances and assets become reliable “e-processes” and are visible across the entire company.

### **Communication, Collaboration, Compliance and Control**

With Synergy all stakeholders have real-time access to relevant information. Collaboration is enabled by integrating business processes throughout the value chain. Compliance is promoted with internal policies and external regulations via highly standardized and transparent systems. Control is established by providing real-time access to key performance indicators.

### **One Source of Information**

All business information and the activities surrounding them are located in one comprehensive, collaborative platform, making information available to employees, management, vendors, suppliers and partners as business issues affect them.



With Exact Synergy you can

- 1** Associate all business process components (documents, transactions, resource involvement) for unparalleled efficiency
- 2** Get a comprehensive, consolidated view of critical business information
- 3** Use the role-based and workflow orientation model for greater corporate accountability
- 4** Get instant visibility of corporate bottlenecks
- 5** Eliminate expensive work redundancy
- 6** Enjoy collaboration across the entire enterprise including employees, customers, vendors and partners
- 7** Ensure that each decision and every action contributes to the flow of business

**= exact**

And it all comes together.



### Activity Monitoring/Exception Management

Any business activity can be examined, analyzed or triggered at any time, including involvement, follow-through, bottlenecks and exceptions.

### Role-based Security Model

All business information is based on roles and rules-based schemas in order to control access. Assets, documents and projects are given specific security clearance ratings so only those who possess the rating can access such information.

### Business Analysis and Statistical Reporting

Rather than a traditional reporting paradigm, Synergy contains continuous monitoring capabilities to manipulate hundreds of pre-defined report templates for greater flexibility in obtaining the most relevant business information and responding quickly to change and opportunity.

### Organization-wide Integration

Business components that are otherwise separate such as projects, customers, financials or product information are intrinsically linked for more related interaction. Any adjustment to one facet automatically updates or triggers any other business process or component that is related or affected.

### Exact Synergy enables you to answer three essential business questions:

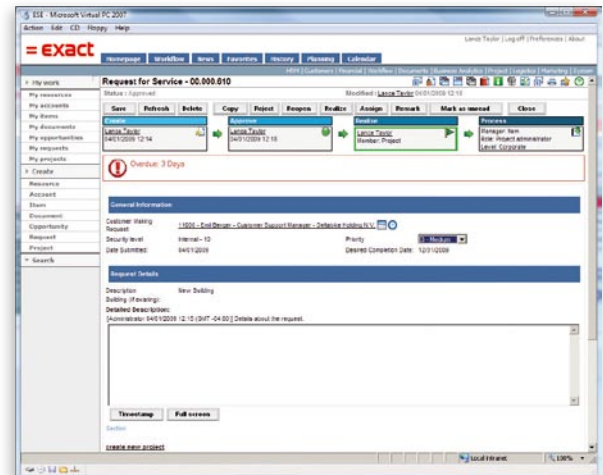
- How are we doing?
- Why are we doing it that way?
- What should we be doing?

### Features and Functions in Synergy:

- Re-usable library of business objects, including workflow requests and document types
- Open desktop portal with application integration and executive dashboards
- Statistical reporting through standardized report templates, enabling transaction volume analysis and real-time querying
- Customized self-service desktop to provide only the most useful information
- Analytical tools for maintaining and monitoring quality for time sensitive, critical tasks

Synergy puts critical business information easily within reach, making it accessible and manageable. Nothing in an enterprise should stand alone, and Synergy ensures complete integration of your

technology, people and processes. It places your employees, customers, partners and suppliers at the heart of your organization. With one view into your business processes, opportunities to lower costs and increase revenue become real and actionable.



Know when critical deadlines are missed so you can take swift corrective action.



“Exact Synergy enables me to keep track of everything going on within my company –anytime, anyplace... This has given me a far better overview and made it much easier to manage both processes and staff.”

Tom Mermans, Managing Director Pentoprint

© Exact Group B.V., 2010. All rights reserved. All trademarks mentioned herein belong to their respective owners.

For further information please call 1.800.468.0834, Ext. 2650 or visit [www.exact.com/synergy-us](http://www.exact.com/synergy-us)

