

# Exact Globe

## Inventory

The ability to access, at any moment in time, precise and relevant business information regarding inventory levels, slow moving inventory, stocking costs, replenishments and requirements along with agreements with suppliers and customers provide you with the power to deliver what you promise.

Exact Globe Inventory is an advanced information system. It is a fully integrated solution where orders, receipts and deliveries are entered and available in real-time, presenting costs and quantities at the time of inquiry. It saves time, eliminates confusion and gives you the power to make decisions based on up-to-the minute information.

**With Exact Globe Inventory, Knowledge is Power.**

- Full Serial and Batch control for trace and recall purposes
- Make use of 30 user-defined fields at the item level to further describe inventory related properties
- Strong ability to perform ABC analysis for fast / slow moving inventory management
- Manage inventory in multiple warehouses for costs and quantities as well as planning and production data
- Associate approved suppliers with inventory, along with different supplier price lists
- View detail Bill of Material information within the main item master
- Assign landed costs for inventory purchases for extraneous costs such as demurrage, freight, etc.
- Advanced functions for bar coding and track & trace



**Exact Globe Inventory business benefits:**

- 1** Increased visibility into actual, real-time inventory quantities and costs
- 2** Management of inventory across multiple warehouses
- 3** React more quickly to customer demands with on-the fly hard inventory allocation
- 4** Reduce inventory holding costs with tight Order Entry to Purchase order interaction
- 5** Gain insight into disposition of serialized and batched inventory for trace and recall purposes
- 6** Maintain inventory-related information in one central system, with embedded document management for instructions, specification sheets, technical documentation, MSDS documents, among others



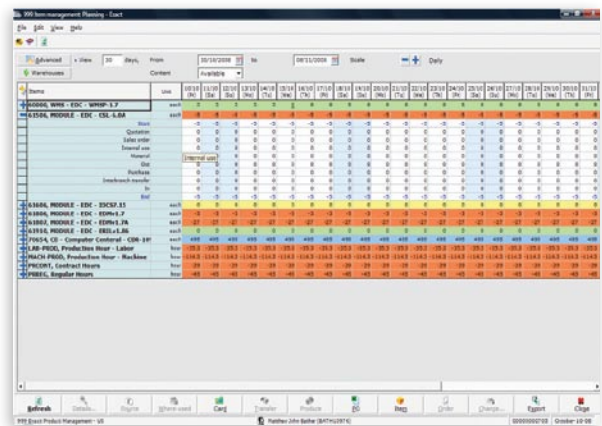
**A flexible system that changes and grows with your business**

Business is under constant pressure to adapt to changing customer demands and economic environments. The right inventory system helps deliver the right product, on time and at the right price.

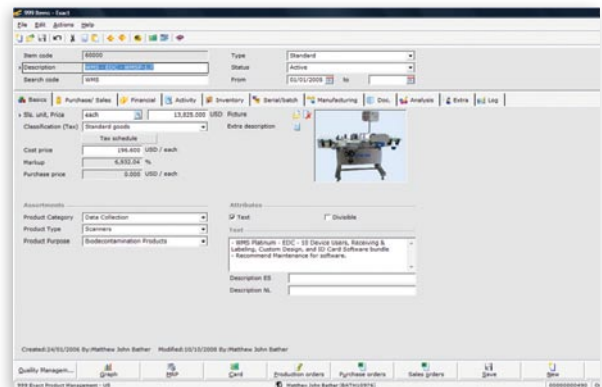
- Effortlessly transfer inventory between warehouses with intermediary warehouse management and control to ensure all inventory is accounted for when required
- Use the Globe Product Configurator for assemble-to-order type requirements
- Access all relevant inventory information from the item card alone
- Upload documents and images within the framework of embedded document management
- Categorize inventory up to 10 levels deep
- Link documentation, photos and other files to the product card

In Exact Globe, all departments within the organization work with a single integrated information system. This provides information consistency and continuity, all the way through to the General Ledger for financial analysis. Now you can manage multiple product lines, warehouses and locations within a single system and work more closely and accurately with your supply chain partners.

This is an inventory system designed for the way today's business works. It provides flexibility and control, and lets you decide how to conduct business today, without having to re-engineer your processes and software implementation. The intent is to allow you to concentrate on growing your enterprise, not spend time managing a software solution.



Complete Inventory Management available at your fingertips for real-time product management.



Exact Globes' Item Master provides all the relevant information in one place for ease of use.

“I’ve been using Exact software since day one, operating full-scale with Financials and Inventory functions and appreciate the benefits of Exact’s user-friendliness. The functionalities are very convenient and efficient to work with.”

–Brenda Wong, Shipping Executive, Vero “Sweet Presents”

